

Organ Weight UCD_OWT_001

Purpose

To evaluate weight of organs.

Experimental Design

- **Minimum number of animals** : 4M + 4F
- **Age at test:** Week 16

Equipment

- fine forceps
- surgical scissors
- fine surgical scissor
- kim wipes (tissues) or surgical compress
- laboratory balance
- labelled jar with fixative
- corkplate or wax board
- pins
- jar containing tap water to rinse the tools

Procedure

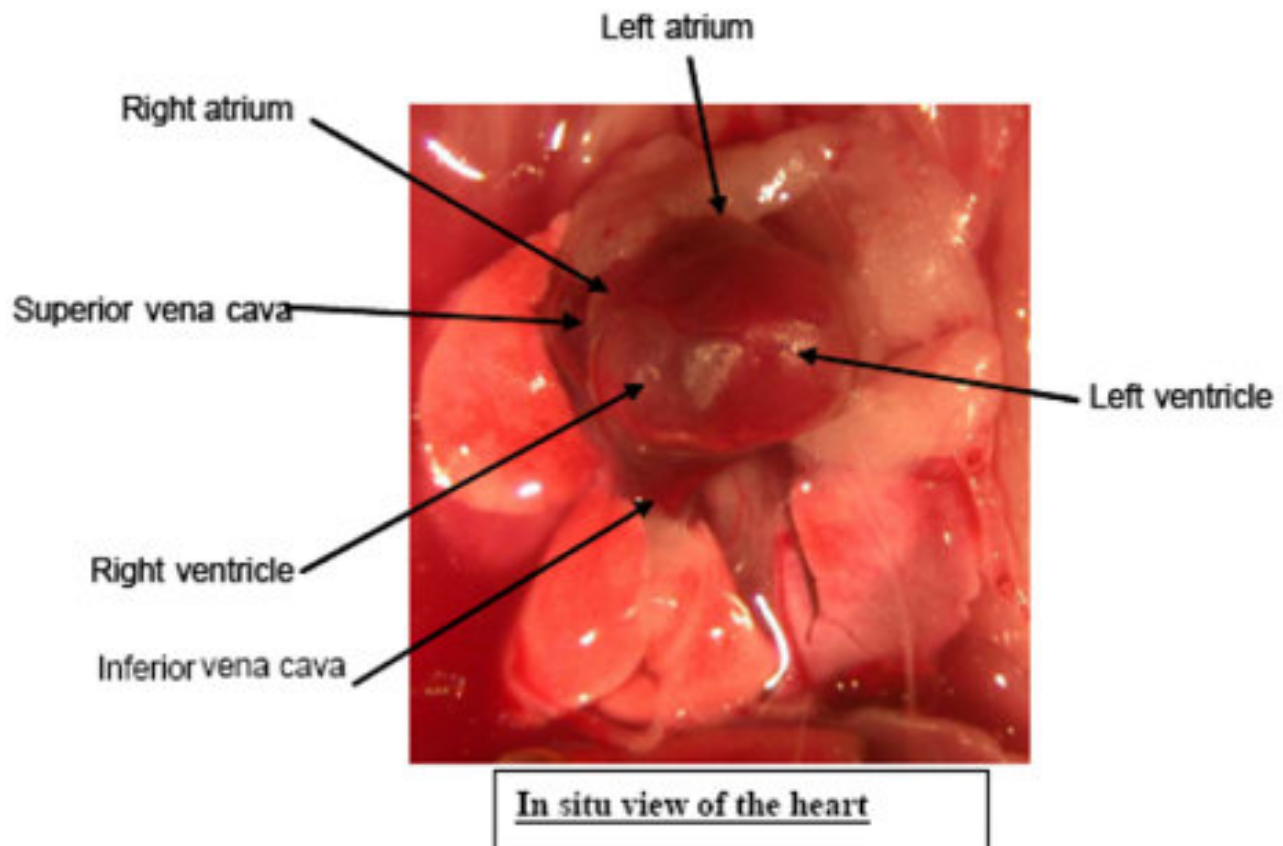
Methods and procedures used not including center-specific data entry methods.

1. Sacrifice the mouse
2. Weigh and record total body weight
3. Place mouse on its back and pin the mouse onto board with extended extremities (inner side of hands and foot)
4. Wipe or wet the mouse with 70% ethanol to control hair and dander
5. Option A (for mice that are undergoing complete necropsy):
 - Proceed with a complete necropsy and tissue collection according to Centre-specific technical SOP including removal of the heart by dissecting the aortic root immediately above the aortic valves and the superior vena cava above the atria
 - Remove adjacent mediastinal fat pads from the excised heart carefully with forceps
 - Empty heart blood by tapping the heart on a kim wipe (absorbent pad) or surgical compress. Repeat until the heart is totally dry

- Weigh the heart and other organs, record the weights in the Centre-specific database, and place the heart in fixative

6. Option B (for mice that are not undergoing complete necropsy):

- Open the skin in the ventral midline and in the direction of the extremities and extend cut to hands and feet
- Open the muscular abdominal wall in the midline and along the lower margin of the rib cage with small forceps
- Open rib cage by removing the sternum and adjacent ribs
- Remove the heart by dissecting the aortic root immediately above the aortic valves and the superior vena cava above the atria
- Remove adjacent mediastinal fat pads from the excised heart carefully with forceps
- Empty heart blood by tapping the heart on a kim wipe (absorbent pad) or surgical compress. Repeat until the heart is totally dry
- Weigh the heart and other organs, and record the weights in the Centre-specific database
- Discard the heart



Notes

All data are collected at a local workstation in the necropsy room (attached to a digital balance) and uploaded to the Centre-specific pathology data capture system.

Data QC

Mouse weight between 5 grams and 150 grams

IMPC Parameters (+ontology annotations)

Weight (in mg)

Data Analysis, annotation and display (+statistics)

Statistics: ANOVA/Wilcoxon test using normalized heart weights (for body weight) displayed in boxplot

Parameters and Metadata

Body weight UCD_OWT_001_001 | v1.0

simpleParameter

Req. Analysis: false

Req. Upload: true

Is Annotated: false

Unit Measured: g

Description: body_weight

Heart weight UCD_OWT_002_001 | v1.0

simpleParameter

Req. Analysis: false

Req. Upload: true

Is Annotated: true

Unit Measured: mg

Description: heart_weight

Spleen weight UCD_OWT_003_001 | v1.0

simpleParameter

Req. Analysis: false

Req. Upload: true

Is Annotated: true

Unit Measured: g

Description: spleen_weight

Left kidney UCD_OWT_004_001 | v1.0

simpleParameter

Req. Analysis: false

Req. Upload: true

Is Annotated: true

Unit Measured: g

Description: left_kidney

Right kidney UCD_OWT_005_001 | v1.0

simpleParameter

Req. Analysis: false

Req. Upload: true

Is Annotated: true

Unit Measured: g

Description: right_kidney

Tibia length UCD_OWT_006_001 | v1.0

simpleParameter

Req. Analysis: false

Req. Upload: false

Is Annotated: true

Unit Measured: mm

Description: tibia_length

Pancreas weight UCD_OWT_007_001 | v1.0

simpleParameter

Req. Analysis: false

Req. Upload: false

Is Annotated: true

Unit Measured: g

Description: pancreas_weight

Liver weight UCD_OWT_008_001 | v1.0

simpleParameter

Req. Analysis: false

Req. Upload: false

Is Annotated: true

Unit Measured: g

Description: liver_weight

Thymus weight UCD_OWT_009_001 | v1.0

simpleParameter

Req. Analysis: false

Req. Upload: false

Is Annotated: true

Unit Measured: g

Description: thymus_weight

Brain weight UCD_OWT_010_001 | v1.0

simpleParameter

Req. Analysis: false

Req. Upload: false

Is Annotated: true

Unit Measured: g

Description: brain_weight

Left lung weight UCD_OWT_011_001 | v1.0

simpleParameter

Req. Analysis: false

Req. Upload: false

Is Annotated: true

Unit Measured: g

Description: left_lung_weight

Right lung weight UCD_OWT_012_001 | v1.0

simpleParameter

Req. Analysis: false

Req. Upload: false

Is Annotated: true

Unit Measured: g

Description: right_lung_weight

Left adrenal gland weight UCD_OWT_013_001 | v1.0

simpleParameter

Req. Analysis: false

Req. Upload: false

Is Annotated: false

Unit Measured: g

Description: left_adrenal_gland_weight

Right adrenal gland weight UCD_OWT_014_001 | v1.0

simpleParameter

Req. Analysis: false

Req. Upload: false

Is Annotated: false

Unit Measured: g

Description: right_adrenal_gland_weight

Left epididymus weight UCD_OWT_015_001 | v1.0

simpleParameter

Req. Analysis: false

Req. Upload: false

Is Annotated: false

Unit Measured: g

Description: left_epididymus_weight

Right epididymus weight UCD_OWT_016_001 | v1.0

simpleParameter

Req. Analysis: false

Req. Upload: false

Is Annotated: false

Unit Measured: g

Description: right_epididymus_weight

Left epididymus adipose tissue weight UCD_OWT_017_001 | v1.0

simpleParameter

Req. Analysis: false

Req. Upload: false

Is Annotated: false

Unit Measured: g

Description: left_epididymus_adipose_tissue_weight

Right epidymus adipose tissue weight UCD_OWT_018_001 | v1.0

simpleParameter

Req. Analysis: false

Req. Upload: false

Is Annotated: false

Unit Measured: g

Description: right_epidymus_adipose_tissue_weight

Left testis weight UCD_OWT_019_001 | v1.0

simpleParameter

Req. Analysis: false

Req. Upload: false

Is Annotated: true

Unit Measured: g

Description: left_testis_weight

Right testis weight UCD_OWT_020_001 | v1.0

simpleParameter

Req. Analysis: false

Req. Upload: false

Is Annotated: true

Unit Measured: g

Description: right_testis_weight

Left female gonadal adipose tissue weight UCD_OWT_021_001 |

v1.0

simpleParameter

Req. Analysis: false

Req. Upload: false

Is Annotated: false

Unit Measured: g

Description: left_female_gonadal_adipose_tissue_weight

Right female gonadal adipose tissue weight UCD_OWT_022_001

| v1.0

simpleParameter

Req. Analysis: false

Req. Upload: false

Is Annotated: false

Unit Measured: g

Description: right_female_gonadal_adipose_tissue_weight

Left ovary weight UCD_OWT_023_001 | v1.0

simpleParameter

Req. Analysis: false

Req. Upload: false

Is Annotated: true

Unit Measured: g

Description: left_ovary_weight

Right ovary weight UCD_OWT_024_001 | v1.0

simpleParameter

Req. Analysis: false

Req. Upload: false

Is Annotated: true

Unit Measured: g

Description: right_ovary_weight

Sub-mandibular salivary gland weight UCD_OWT_025_001 | v1.0

simpleParameter

Req. Analysis: false

Req. Upload: false

Is Annotated: false

Unit Measured: g

Description: sub_mandibular_salivary_gland_weight

Interscapular BAT weight UCD_OWT_026_001 | v1.0

simpleParameter

Req. Analysis: false

Req. Upload: false

Is Annotated: false

Unit Measured: g

Description: interscapular_bat_weight

Left retroperitoneal adipose tissue weight UCD_OWT_027_001 |

v1.0

simpleParameter

Req. Analysis: false

Req. Upload: false

Is Annotated: false

Unit Measured: g

Description: left_retroperitoneal_adipose_tissue_weight

Right retroperitoneal adipose tissue weight UCD_OWT_028_001

| v1.0

simpleParameter

Req. Analysis: false

Req. Upload: false

Is Annotated: false

Unit Measured: g

Description: right_retroperitoneal_adipose_tissue_weight

Body length UCD_OWT_029_001 | v1.0

simpleParameter

Req. Analysis: false

Req. Upload: false

Is Annotated: true

Unit Measured: mm

Description: body_length

Experimenter ID UCD_OWT_030_001 | v1.0

procedureMetadata

Req. Analysis: false

Req. Upload: true

Is Annotated: false

Description: experimenter_id

Date of sacrifice UCD_OWT_031_001 | v1.0

procedureMetadata

Req. Analysis: false

Req. Upload: true

Is Annotated: false

Description: date_of_sacrifice

Method of sacrifice UCD_OWT_032_001 | v1.0

procedureMetadata

Req. Analysis: true

Req. Upload: true

Is Annotated: false

Description: method_of_sacrifice

Equipment ID UCD_OWT_033_001 | v1.0

procedureMetadata

Req. Analysis: false

Req. Upload: true

Is Annotated: false

Description: equipment_id

Date equipment last calibrated UCD_OWT_034_001 | v1.0

procedureMetadata

Req. Analysis: false

Req. Upload: false

Is Annotated: false

Description: date_equipment_last_calibrated

Equipment manufacturer UCD_OWT_035_001 | v1.0

procedureMetadata

Req. Analysis: true

Req. Upload: true

Is Annotated: false

Description: equipment_manufacturer

Equipment model UCD_OWT_036_001 | v1.0

procedureMetadata

Req. Analysis: true

Req. Upload: true

Is Annotated: false

Description: equipment_model
